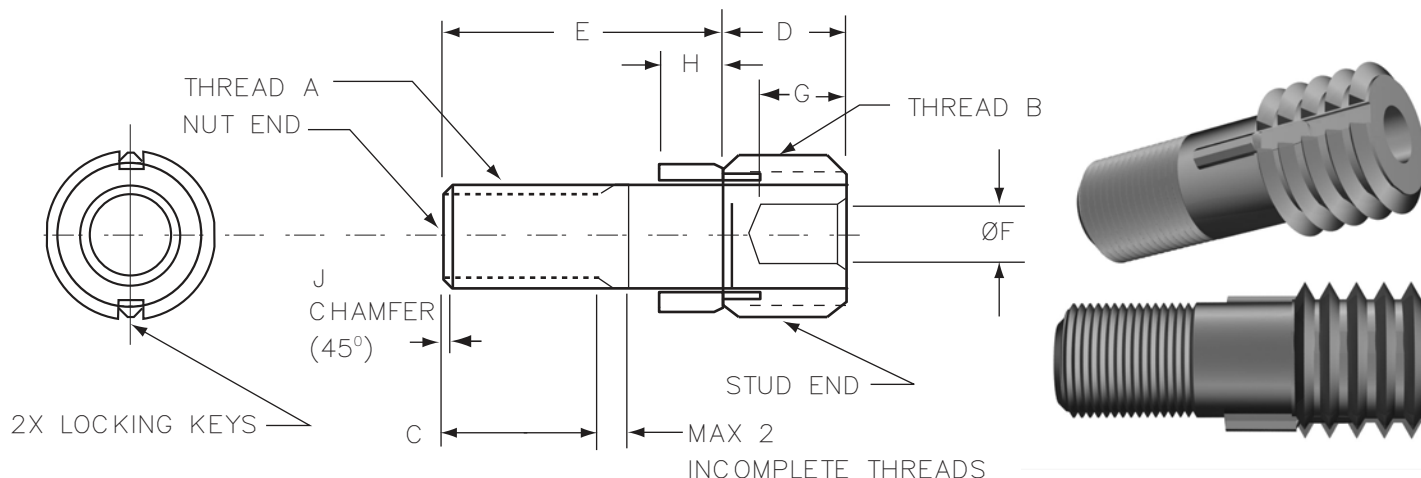


PART NUMBER	A NUT END THREAD UNJF-3A REF	B STUD END THD MOD MINOR Ø		C MIN	D	E	F	G	H REF
		THREAD UNC-2A	MINOR Ø REF						
RA2006-1	.2500-28	.3750-16	.320 .312	.503	.385 .365	.655 .595	.198 .178	.300 .240	.190
RA2006-2	.2500-28	.3750-16	.320 .312	.628	.385 .365	.780 .720	.198 .178	.300 .240	.190
RA2006-3	.2500-28	.3750-16	.320 .312	.750	.385 .365	.905 .845	.198 .178	.300 .240	.190
RA2006-4	.2500-28	.3750-16	.320 .312	1.000	.385 .365	1.330 1.270	.198 .178	.300 .240	.190
RA2006-5	.2500-28	.3750-16	.320 .312	.688	.385 .365	.8425 .7825	.198 .178	.300 .240	.190
RA2006-6	.2500-28	.3750-16	.320 .312	.950	.385 .365	1.280 1.220	.198 .178	.300 .240	.190

1. MATERIAL: STUDS - A286 CRES PER AMS5731. AMS5734 OR AMS5737
KEYS - 420 CRES PER AMS-QQ-S-763 (CHEMISTRY ONLY).
2. HEAT TREAT: STUDS - 140 KSI PER AMS2759 OR AMS5737
KEYS - HRC50 MINIMUM.
3. FINISH: STUDS - PASSIVATE PER AMS-QQ-P-35
KEYS - PASSIVATE PER AMS-QQ-P-35
4. THREADS: NUT END - PER AS8879.
STUD END - PER FED-STD-28/2. EXCEPT MINOR DIA. MODIFIED AS SPECIFIED ABOVE.
5. STUD SHALL BE FREE FROM HANGING BURRS OR SLIVERS
6. REF. INSTALLATION OF STUDS SHALL BE IN ACCORDANCE WITH MS51835

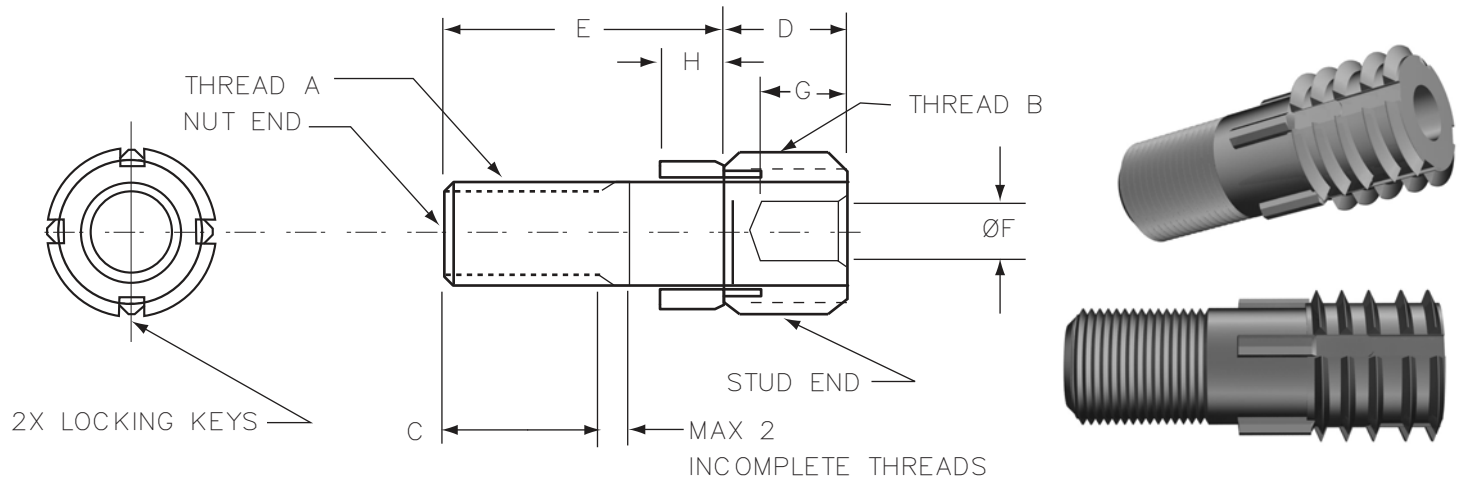
CAGE CODE 63EM5	DWG NO. RA2006 REV: NC SHEET 1 OF 3	Drawn by: <i>[Signature]</i>	Date: <i>5/4/12</i>
		Approved by: <i>[Signature]</i>	Date: 05/04/2012



PART NUMBER	A NUT END THREAD UNJF-3A REF	B STUD END THD MOD MINOR Ø		C MIN	D	E	F	G	H REF	J
		THREAD UNC-2A	MINOR Ø REF							
RA2006-13	.2500-28	.3750-16	.320 .312	.440	.385 .365	.640 .610	.198 .178	.300 .240	.190	.020 .010
RA2006-14	.2500-28	.3750-16	.320 .312	.440	.385 .365	.703 .673	.198 .178	.300 .240	.190	.020 .010

1. MATERIAL: STUDS - A286 CRES PER AMS5731. AMS5734 OR AMS5737
KEYS - 420 CRES PER AMS-QQ-S-763 (CHEMISTRY ONLY).
2. HEAT TREAT: STUDS - 140 KSI PER AMS2759 OR AMS5737.
KEYS - HRC50 MINIMUM.
3. FINISH: STUDS - PASSIVATE PER AMS-QQ-P-35
KEYS - PASSIVATE PER AMS-QQ-P-35
4. THREADS: NUT END - PER AS8879.
STUD END - PER FED-STD-28/2. EXCEPT MINOR DIA. MODIFIED
AS SPECIFIED ABOVE.
5. STUD SHALL BE FREE FROM HANGING BURRS OR SLIVERS
6. REF. INSTALLATION OF STUDS SHALL BE IN ACCORDANCE WITH MS1835

CAGE CODE 63EM5	DWG NO. RA2006 REV: NC SHEET 2 OF 3	Drawn by: <i>[Signature]</i>	Date: 5/4/12
		Approved by: <i>[Signature]</i>	Date: 05/04/2012



PART NUMBER	A NUT END THREAD UNJF-3A REF	B STUD END THD MOD MINOR Ø		C MIN	D	E	F	G	H REF
		THREAD UNC-2A	MINOR Ø REF						
RA2006-7	.2500-28	.4375-14	.383 .375	.503	.385 .365	.655 .595	.260 .240	.300 .240	.190
RA2006-8	.2500-28	.4375-14	.383 .375	.628	.385 .365	.780 .720	.260 .240	.300 .240	.190
RA2006-9	.2500-28	.4375-14	.383 .375	.750	.385 .365	.905 .845	.260 .240	.300 .240	.190
RA2006-10	.2500-28	.4375-14	.383 .375	1.000	.385 .365	1.330 1.270	.260 .240	.300 .240	.190
RA2006-11	.2500-28	.4375-14	.383 .375	.688	.385 .365	.8425 .7825	.260 .240	.300 .240	.190
RA2006-12	.2500-28	.4375-14	.383 .375	.950	.385 .365	1.280 1.220	.260 .240	.300 .240	.190

1. MATERIAL: STUDS - A286 CRES PER AMS5731. AMS5734 OR AMS5737
KEYS - 420 CRES PER AMS-QQ-S-763 (CHEMISTRY ONLY).
2. HEAT TREAT: STUDS - 140 KSI PER AMS2759 OR AMS5737.
KEYS - HRC50 MINIMUM.
3. FINISH: STUDS - PASSIVATE PER AMS-QQ-P-35
KEYS - PASSIVATE PER AMS-QQ-P-35
4. THREADS: NUT END - PER AS8879.
STUD END - PER FED-STD-28/2. EXCEPT MINOR DIA. MODIFIED
AS SPECIFIED ABOVE.
5. STUD SHALL BE FREE FROM HANGING BURRS OR SLIVERS
6. REF. INSTALLATION OF STUDS SHALL BE IN ACCORDANCE WITH MS51835

CAGE CODE 63EM5	DWG NO. RA2006 REV: NC SHEET 3 OF 3	Drawn by: <i>[Signature]</i>	Date: <i>5/4/12</i>
		Approved by: <i>[Signature]</i>	Date: 05/04/2012